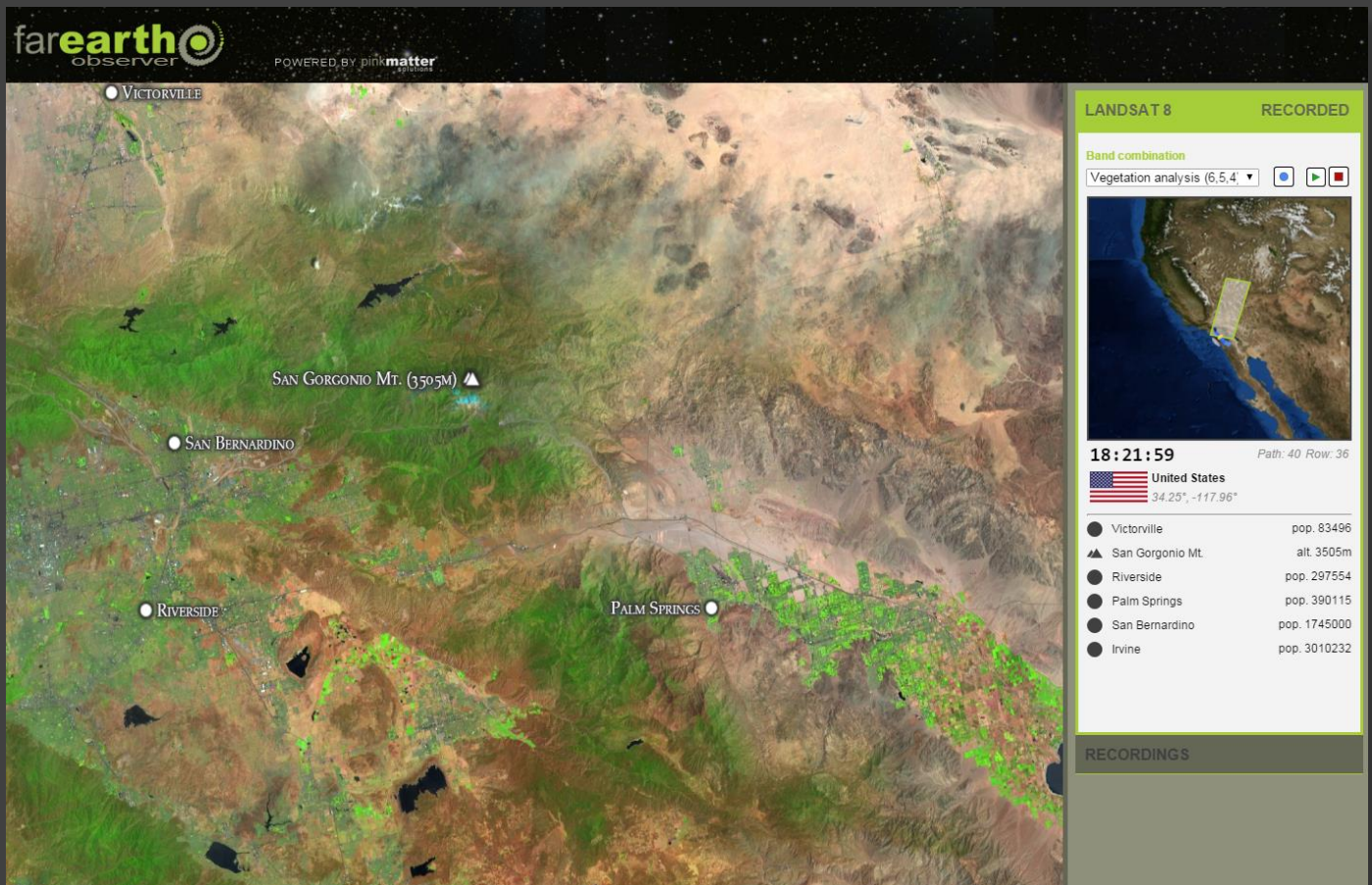


observer

live • real-time • imagery

FarEarth Observer is a moving window system that provides real-time monitoring and visualization of received satellite passes. A live view is provided to users via the web.



Quicklook and quality assessment data is displayed as soon as a pass is received from the satellite, making it easy for operators to verify reception quality. The moving window also becomes a valuable tool in debugging reception problems or data quality issues. In addition, its visual appeal makes it great to entertain management or visitors.

The FarEarth Observer is a full-fledged, real-time level 1 processing system that can be extended for additional sensors. Currently Landsat 7 and 8 are supported with MODIS (Aqua/Terra) and NPP VIIRS under development.

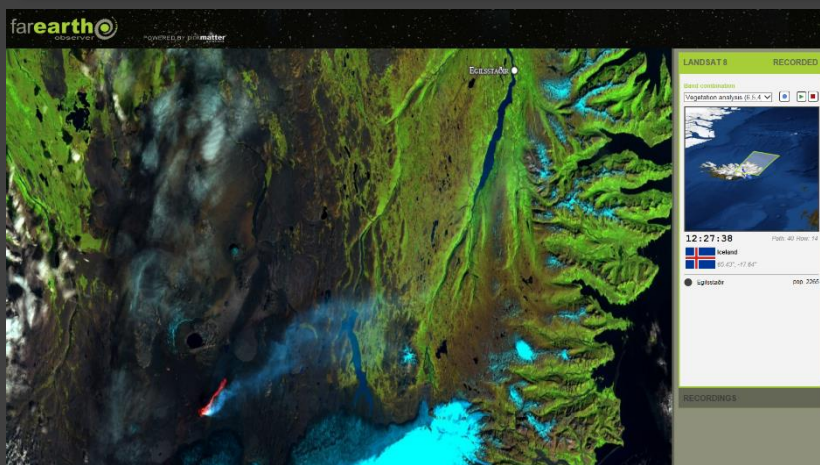
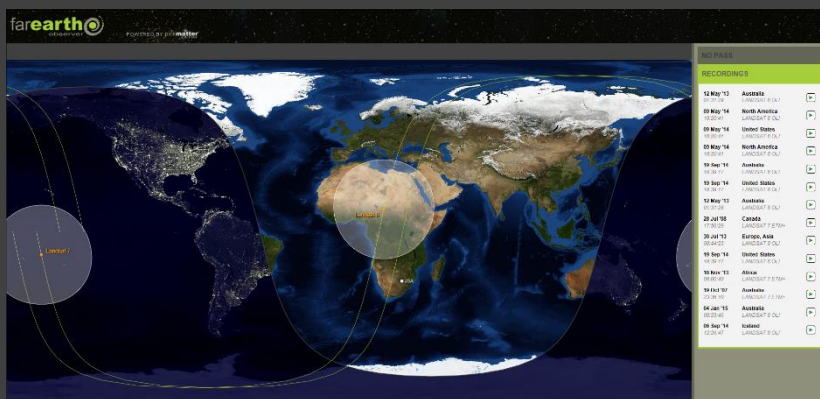
Plugins are available for real-time fire detection and notification as well as real-time classification of downlinked imagery.

Data is streamed directly from the demodulator to the FarEarth Moving Window Server where it gets compressed and stored. Live as well as recorded passes can be viewed by operators directly or over the Internet using nothing more than a web browser.



Features at a glance

- Display of current satellite position and footprint
- Automatic switching to moving window when live pass starts
- Zoomed in mini map view indicating satellite position and ground track
- Replaying of recorded passes, manually or automatically
- Quality indicator for dropped scan lines and transmission errors
- Support for multiple band combinations
- Optimized for viewing over the Internet
- Supports latest Internet Explorer and Chrome web browsers
- Support for Landsat 7 and 8



Observer satellite tracker (top)

Observer pass replay (bottom)